

STR-DE835/DE935/SE591/V828

SERVICE MANUAL



Photo : STR-DE935

US Model
STR-DE835/DE935/SE591
Canadian Model
STR-DE835/DE935
E Model
Australian Model
PX Model
STR-DE835
Chinese Model
STR-V828

Manufactured under license from Dolby Laboratories Licensing Corporation.

“DOLBY” and the double-D symbol $\square\square$ are trademarks of Dolby Laboratories Licensing Corporation.

SPECIFICATIONS

AUDIO POWER SPECIFICATIONS:

POWER OUTPUT AND TOTAL

HARMONIC DISTORTION:

With 8 Ω loads, both channels driven, from 20 – 20,000 Hz; rated 110 W(STR-DE935) and 100 W(STR-DE835/SE591) per channel minimum RMS power, with no more than 0.09% total harmonic distortion from 250 mW to rated output (USA model only).

Amplifier section

POWER OUTPUT

Stereo mode (8 Ω 20Hz – 20kHz, THD 0.09%)
USA, Canadian models
STR-DE935 : 110W + 110W
STR-DE835/SE591 : 100W + 100W
Other models
95W + 95W
(8 Ω 20Hz-20kHz, THD 0.09%)
135W + 135W
(8 Ω at 1kHz, THD 10%)
Surround mode
USA, Canadian models
(8 Ω at 1kHz, THD 0.8%)
STR-DE935
Front: 110W + 110W
Center^{a)}: 110W
Rear^{a)}: 110W + 110W
STR-DE835/SE591
Front: 100W + 100W
Center^{a)}: 100W
Rear^{a)}: 100W + 100W
Other models
Rated power
(8 Ω at 1kHz, THD 0.7%)
Front: 100W + 100W
Center^{a)}: 100W
Rear^{a)}: 100W + 100W

Reference

(8 Ω 20Hz-20Hz, THD 0.9%)
Front: 95W + 95W
Center^{a)}: 95W
Rear^{a)}: 95W + 95W
(8 Ω at 1kHz, THD 10%)
Front: 135W + 135W
Center^{a)}: 135W
Rear^{a)}: 135W + 135W

a) Depending on the sound field settings and the source, there may be no sound output.

Dynamic power output

STR-DE935 : 165W + 165W, 8 Ω
250W + 250W, 4 Ω
STR-DE835/SE591 : 155W + 155W, 8 Ω
240W + 240W, 4 Ω

Frequency response

PHONO: RIAA
equalization curve ± 0.5 dB
CD, TAPE, MD/DAT, TAPE/MD, DVD/LD,
TV/SAT, VIDEO 1, 2, and VIDEO 3(STR-
DE935 only):
10Hz – 50kHz + 0.5/–2dB (with sound field,
equalizer, and bass boost bypassed)

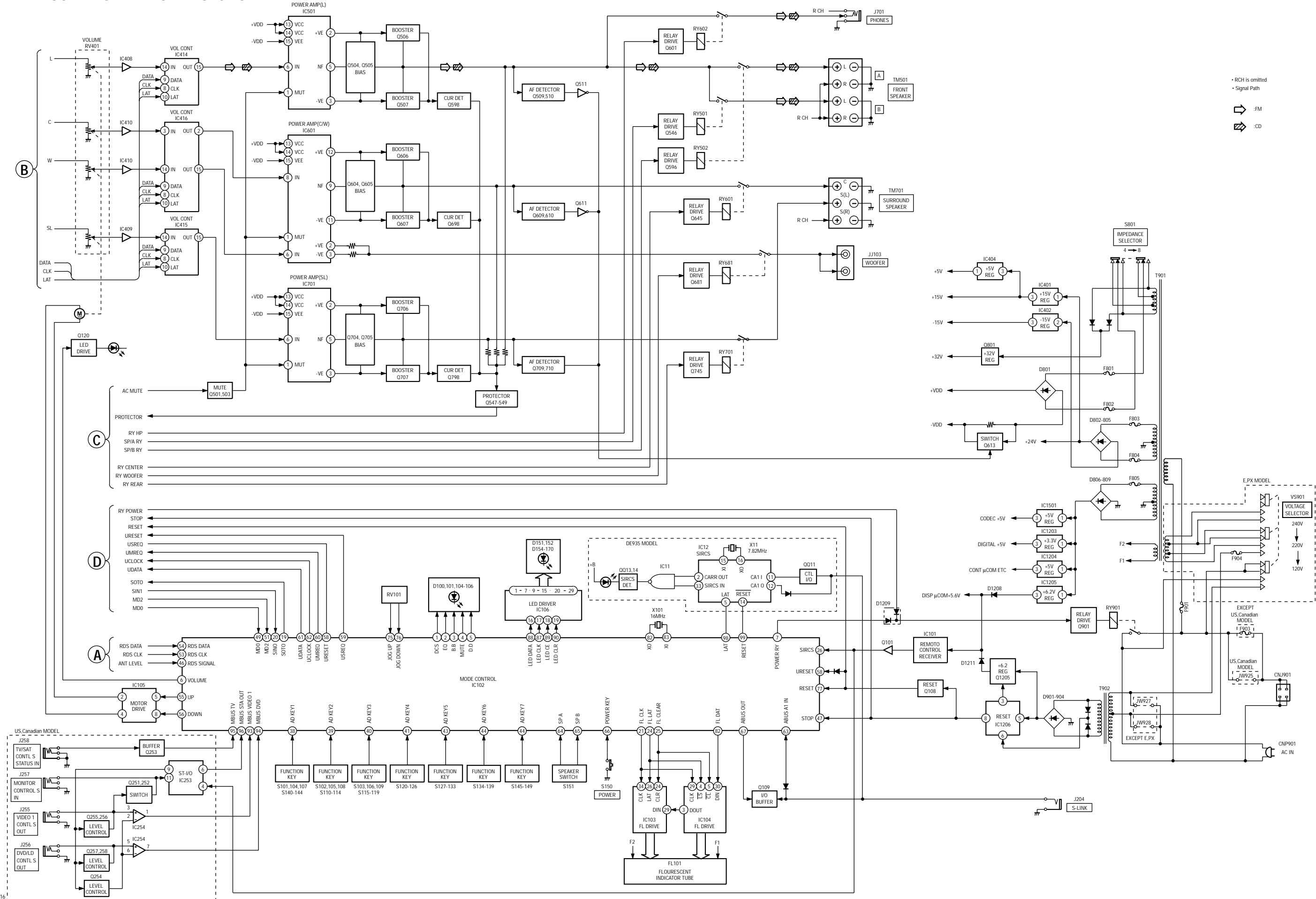
— Continued on next page —

FM STEREO FM-AM RECEIVER

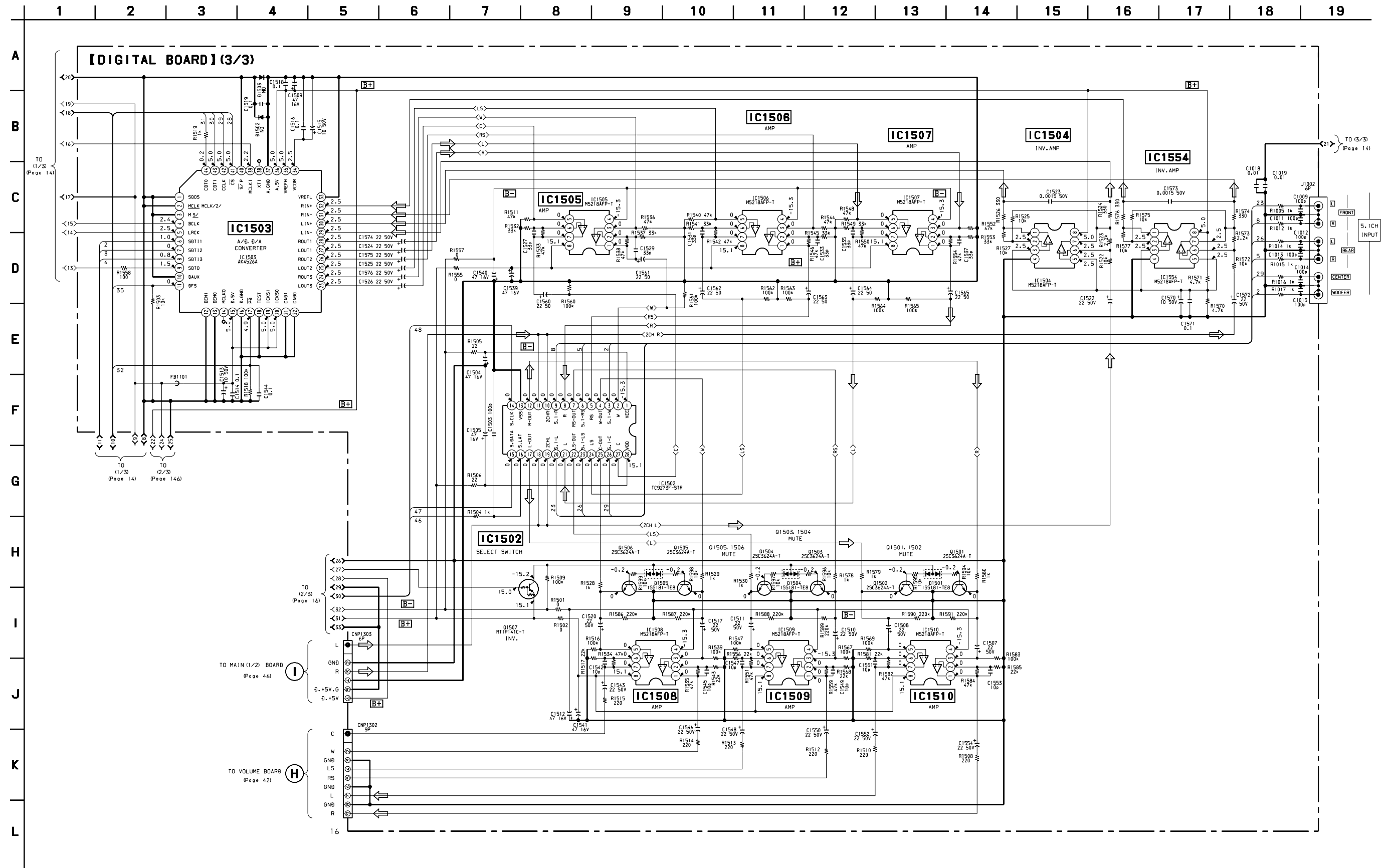


SONY®

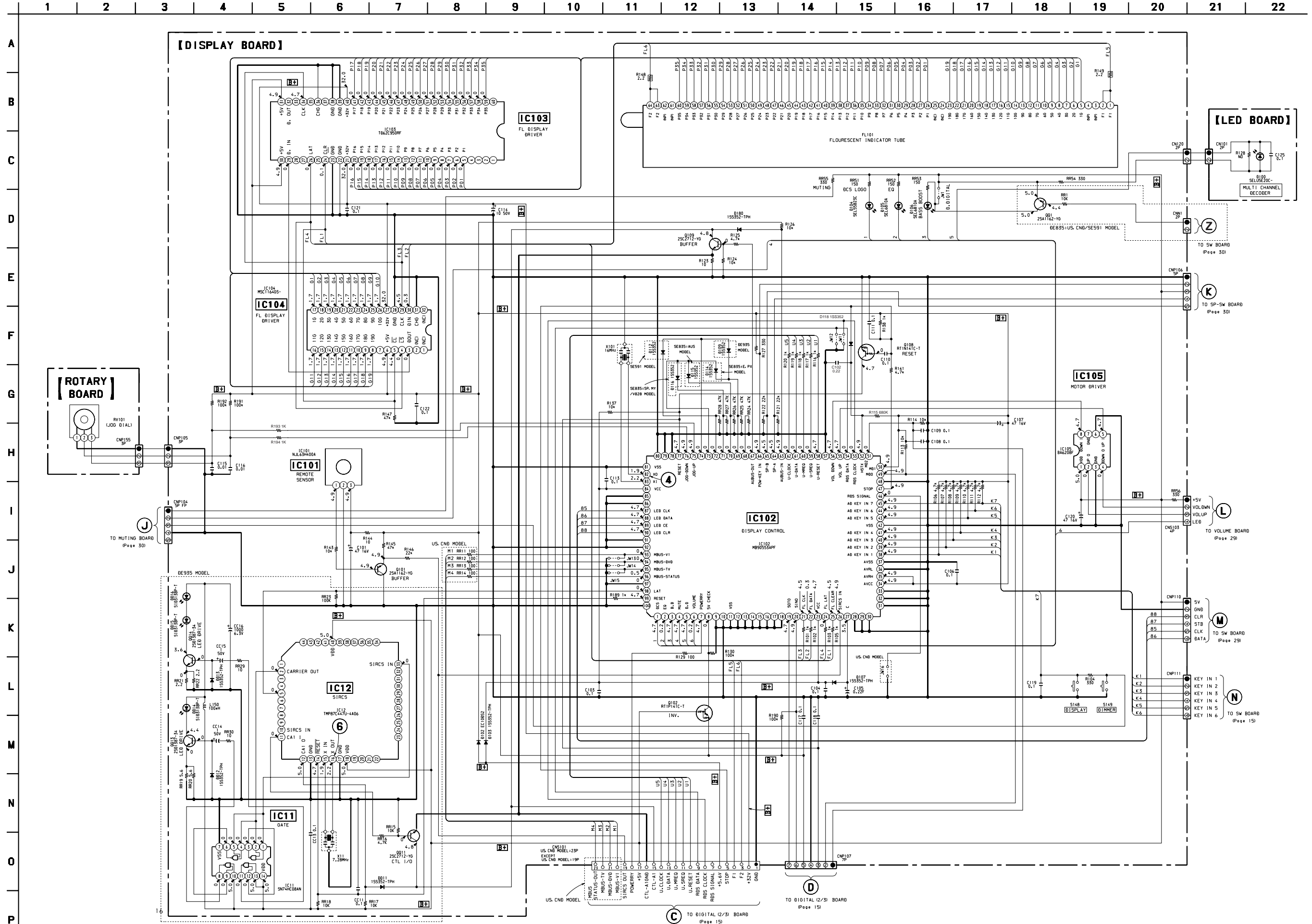
4-2. BLOCK DIAGRAM POWER SECTION



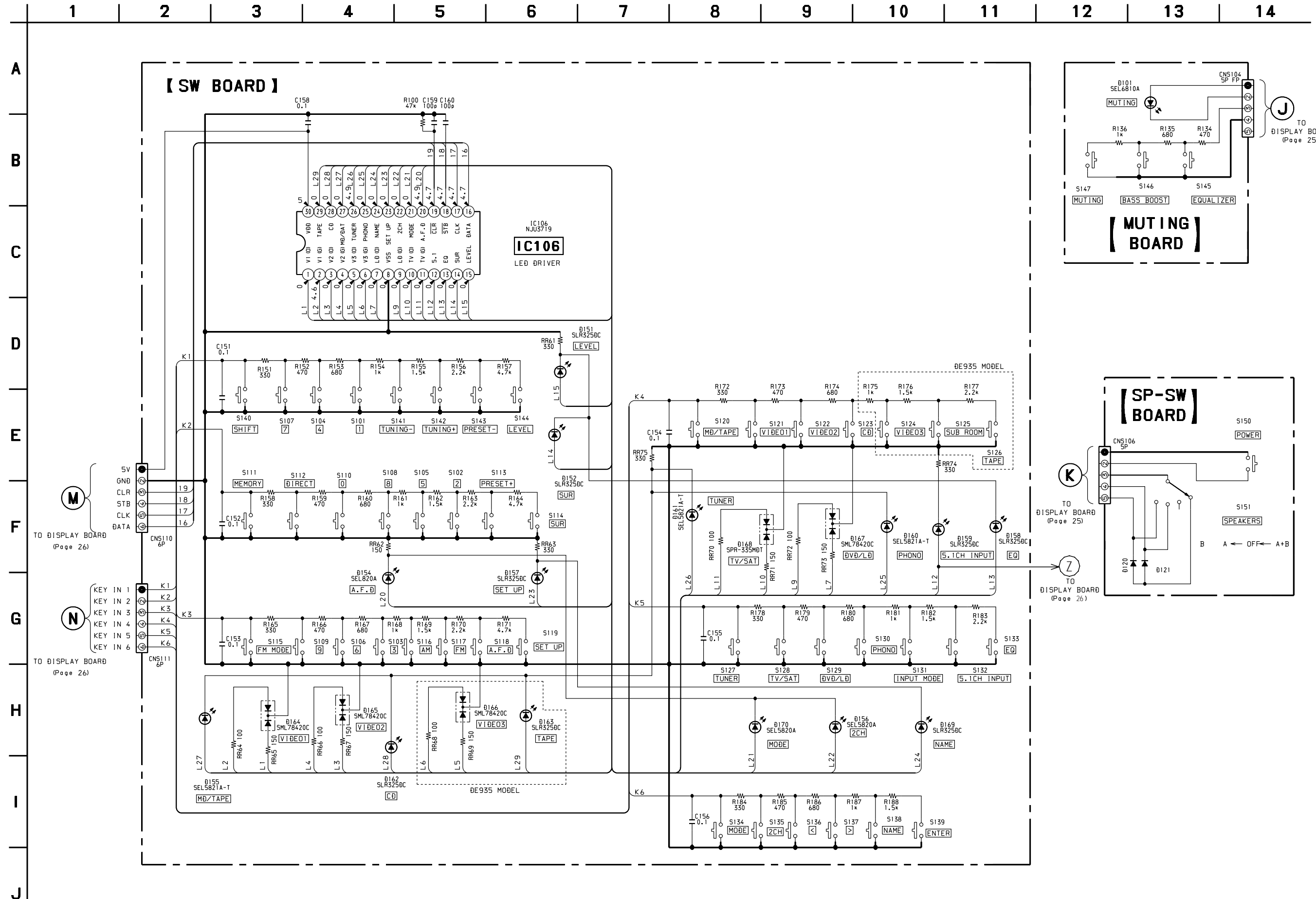
4-6. SCHEMATIC DIAGRAM DIGITAL SECTION(3/3) • See page 19 for printed wiring board. • See page 54 for IC Pin Functions. • See page 59 for IC Block Diagrams.



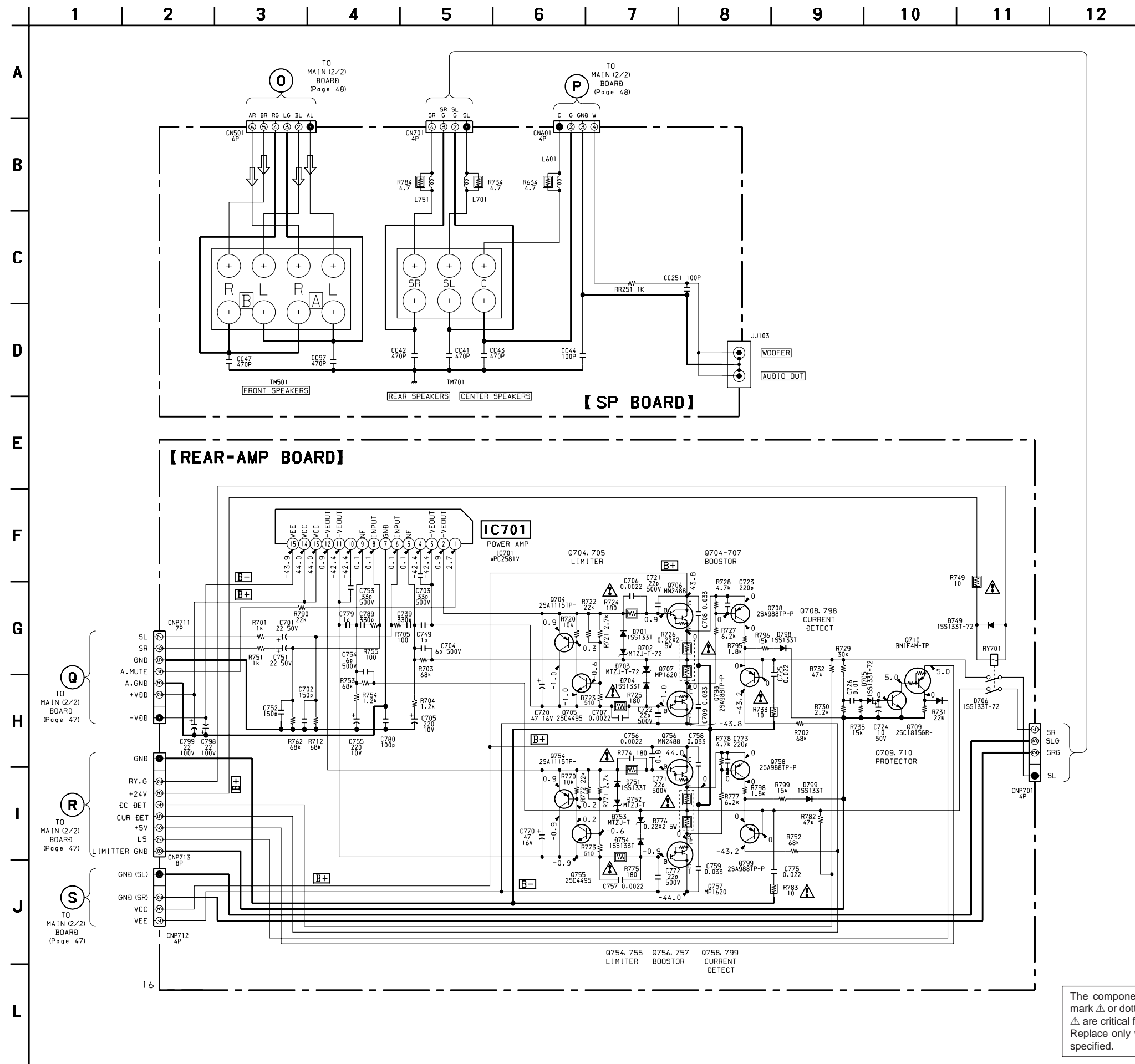
4-10. SCHEMATIC DIAGRAM DISPLAY SECTION • See page 12 for Waveforms. • See page 56 for IC Pin Functions. • See page 61 for IC Block Diagrams.



4-12. SCHEMATIC DIAGRAM SURROUND SECTION

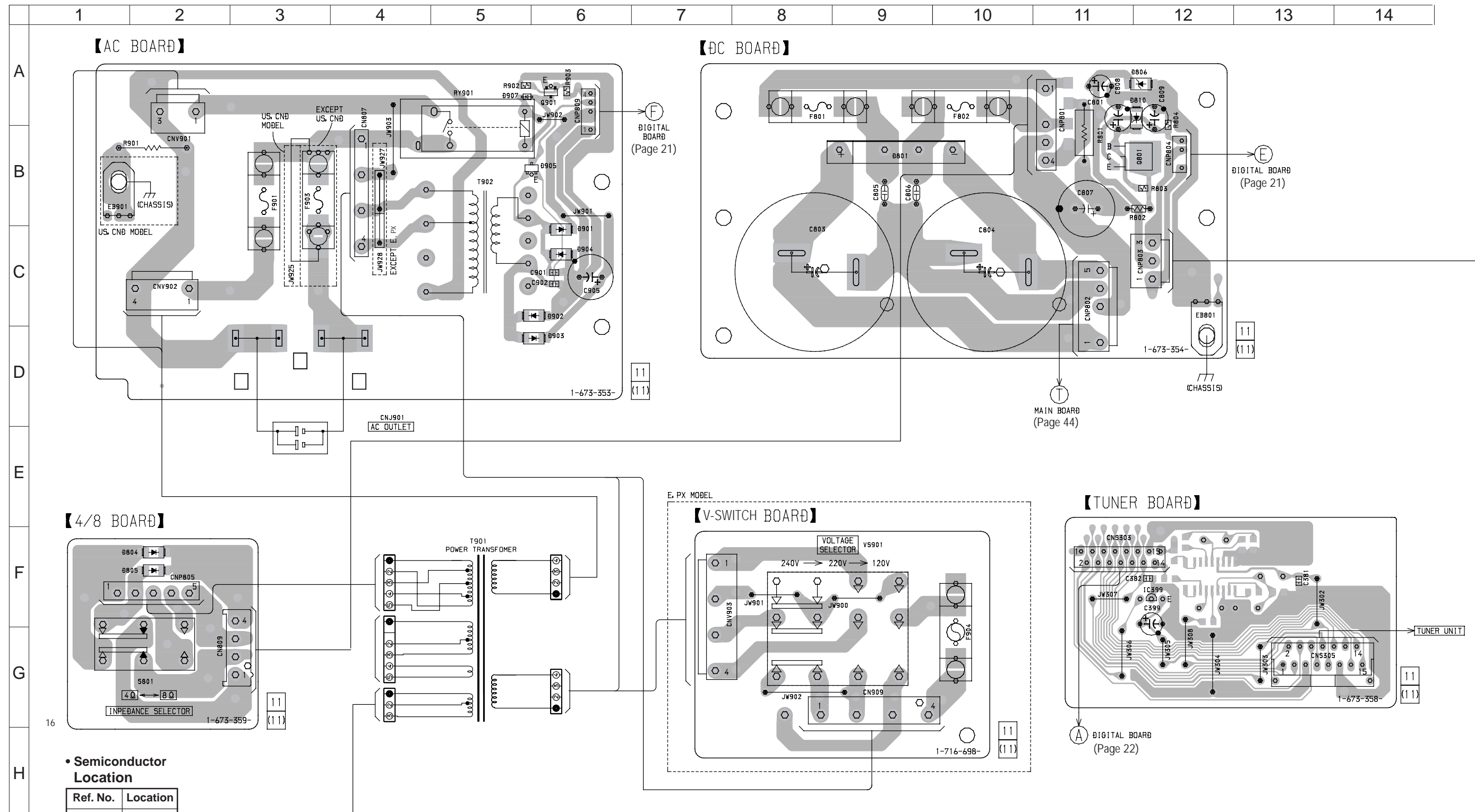


4-14. SCHEMATIC DIAGRAM REAR AMP SECTION • See page 58 for IC Block Diagrams.

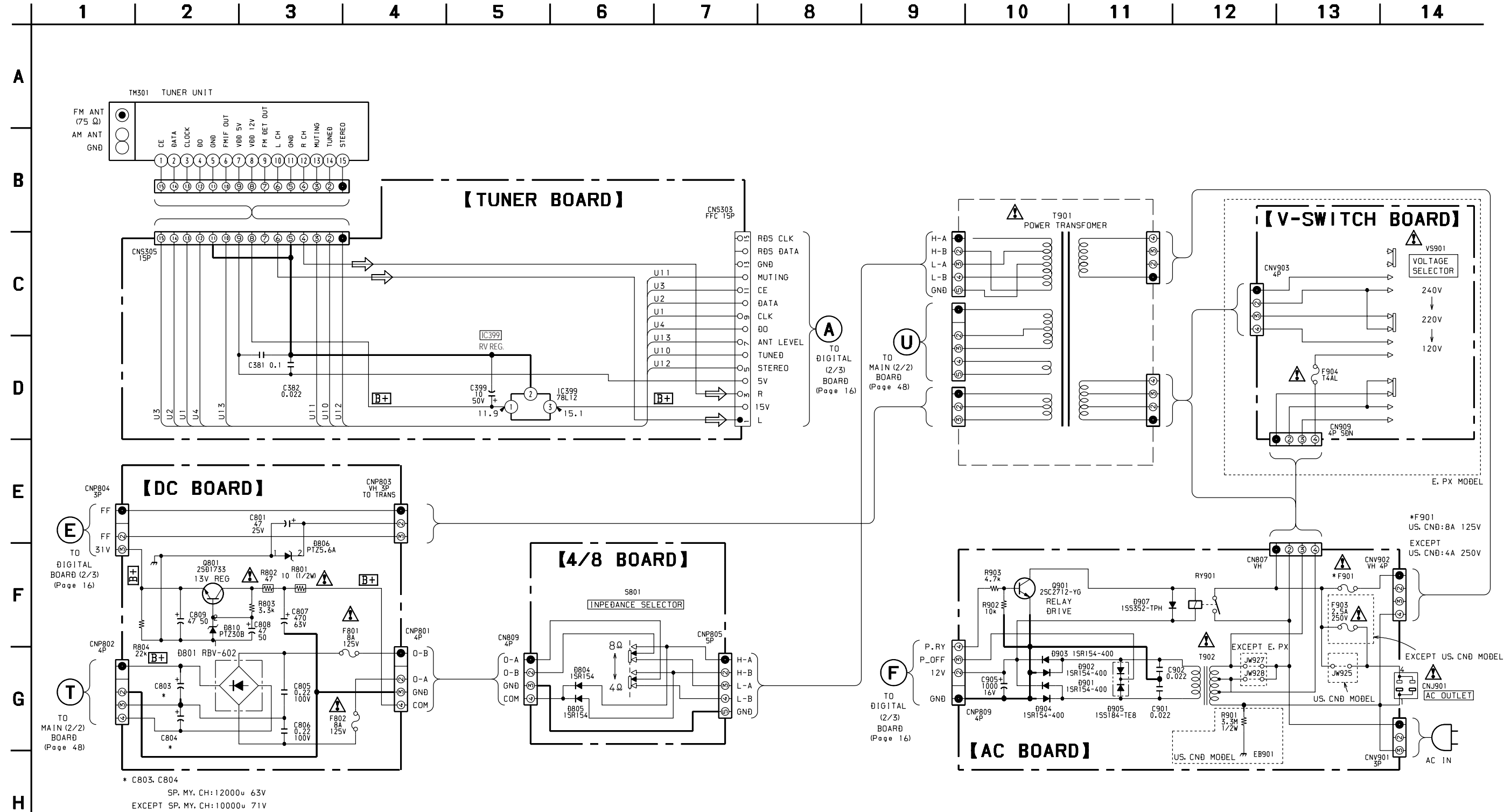


<p>The components identified by mark ▲ or dotted line with mark ⋯ are critical for safety. Replace only with part number specified.</p>	<p>Les composants identifiés par une marque ▲ sont critiques pour la sécurité. Ne les remplacer que par une pièce portant le numéro spécifié.</p>	<p>以阴影和 ▲ 标志来识别的零部件，在安全方面具有关键性。因此只能以规定号码的零部件来更换。</p>
---	---	--

4-15. PRINTED WIRING BOARD POWER SECTION • See page 11 for circuit board location.



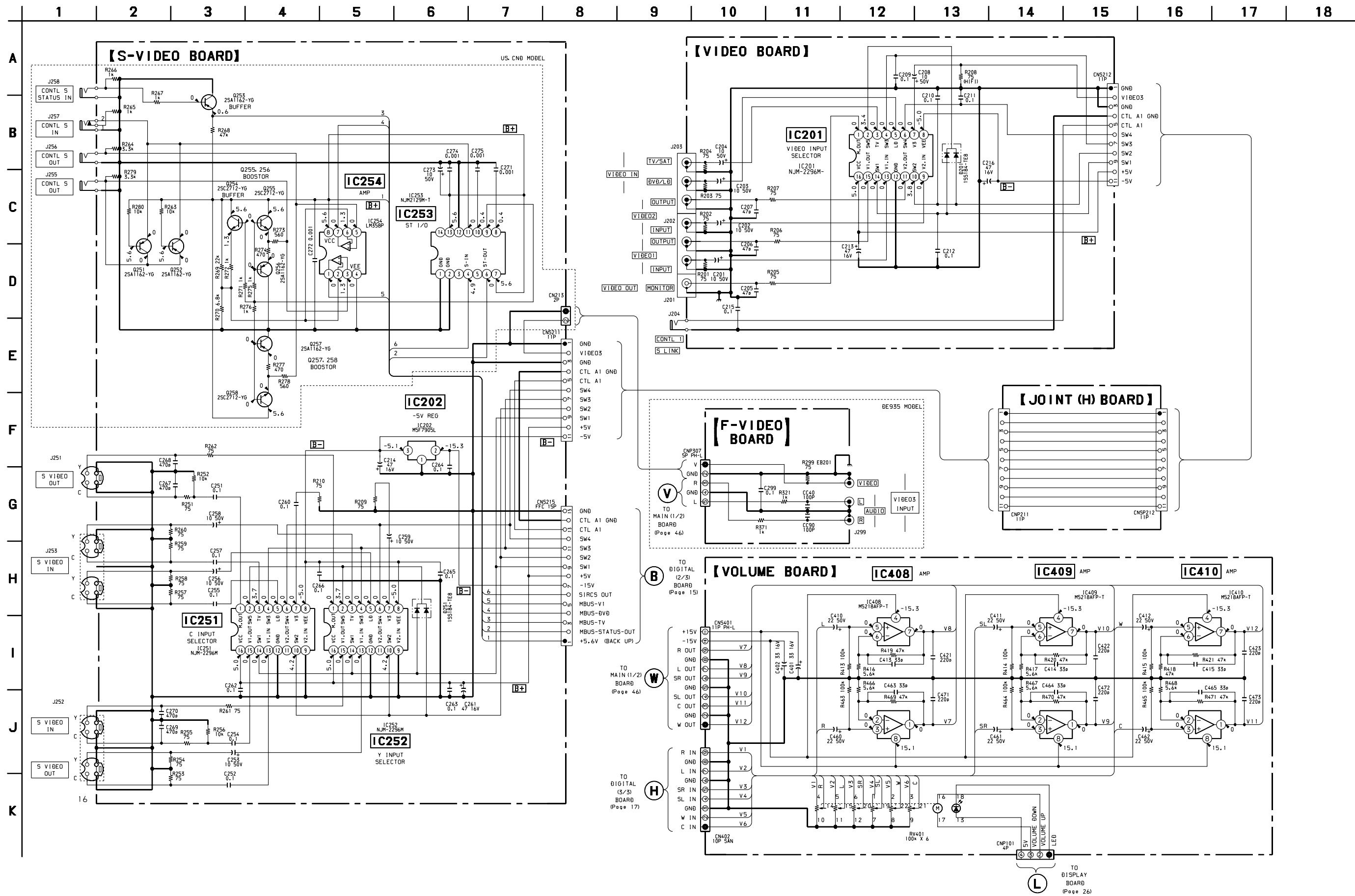
4-16. SCHEMATIC DIAGRAM TUNER/POWER SECTION



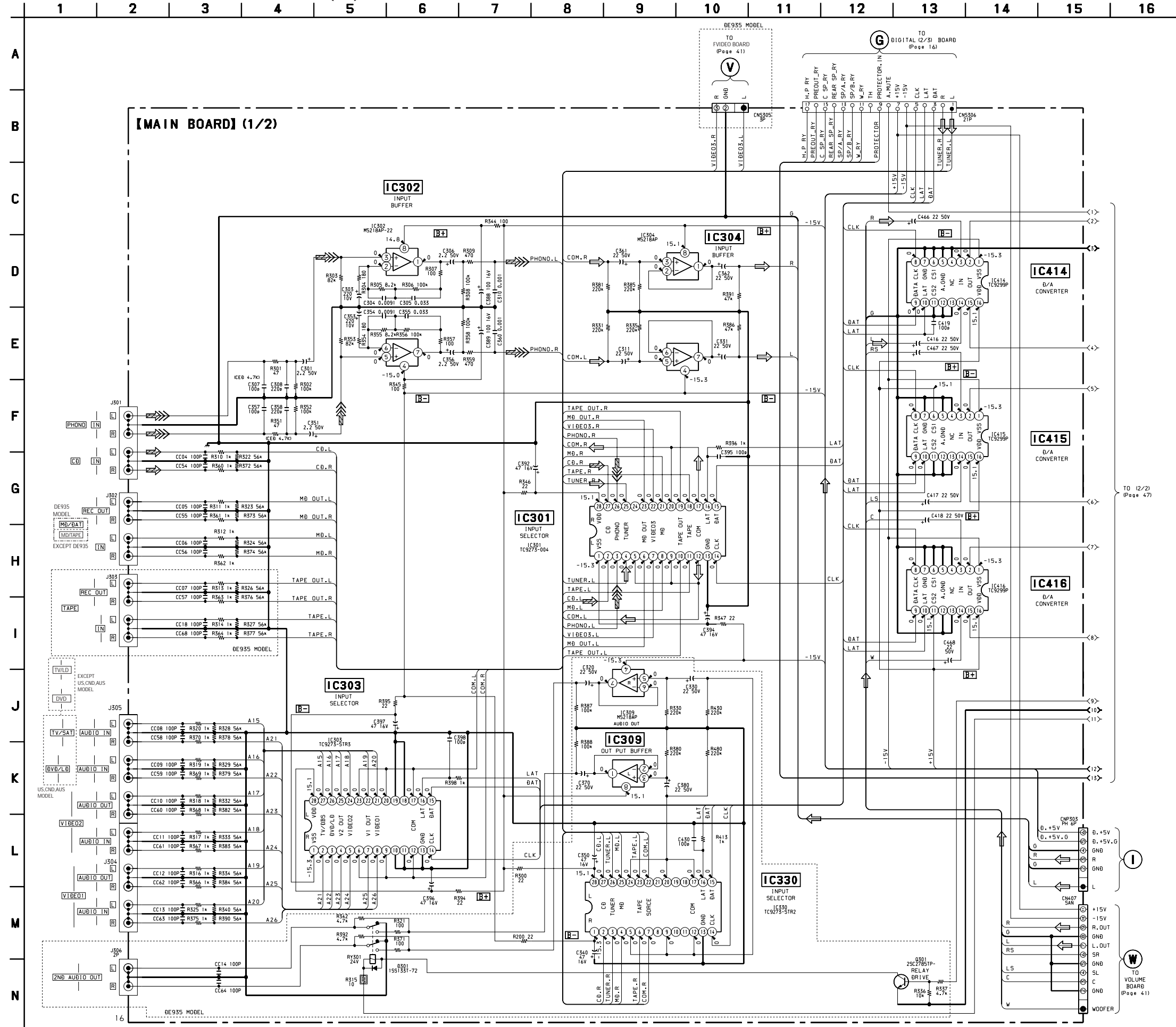
16

<p>The components identified by mark \triangle or dotted line with mark \triangle are critical for safety. Replace only with part number specified.</p>	<p>Les composants identifiés par une marque \triangle sont critiques pour la sécurité. Ne les remplacer que par une pièce portant le numéro spécifié.</p>	<p>以阴影和 \triangle 标志来识别的零部件，在安全方面具有关键性。因此只能以规定号码的零部件来更换。</p>
---	--	---

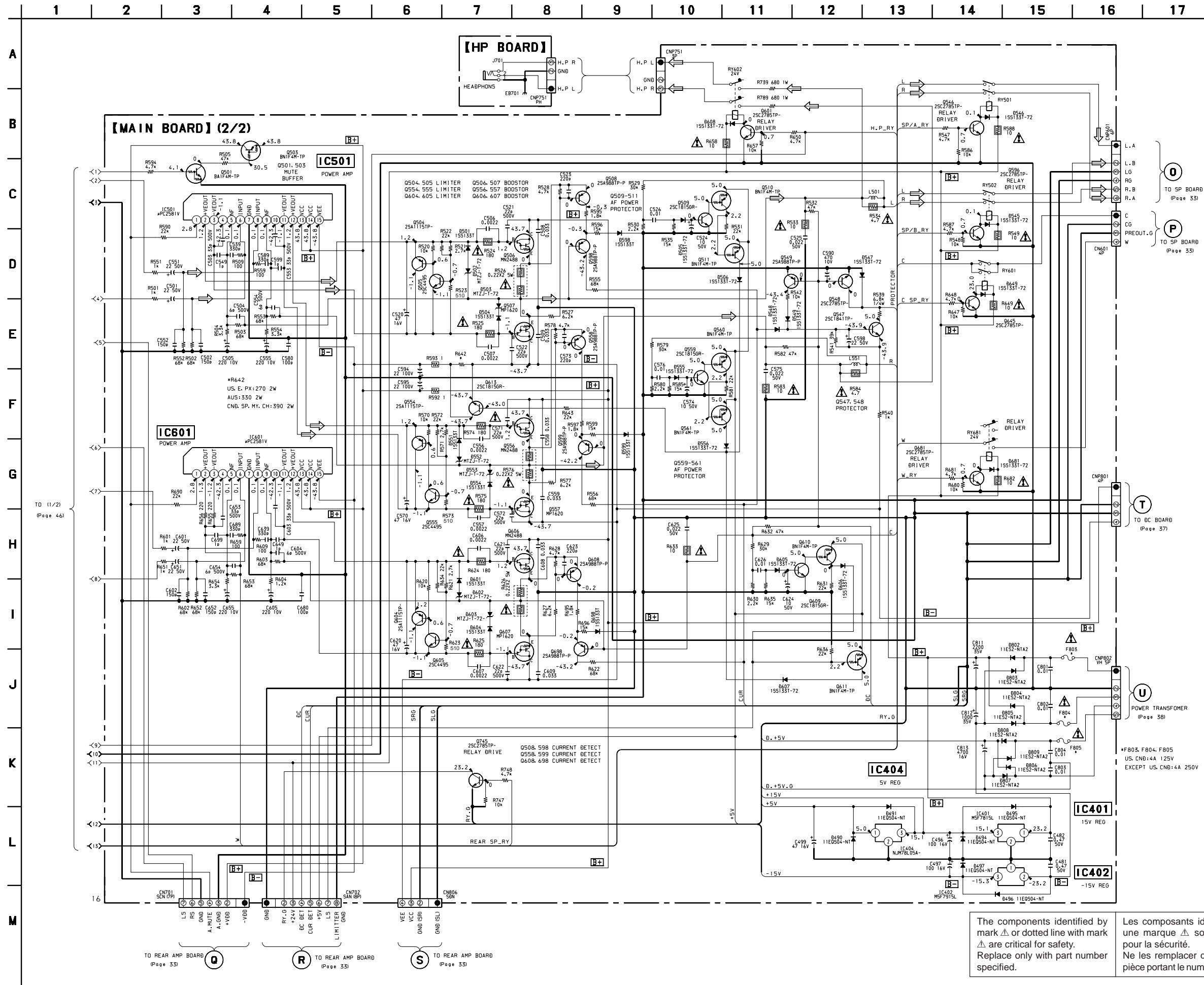
4-18. SCHEMATIC DIAGRAM VIDEO SECTION • See page 60 for IC Block Diagrams.



4-20. SCHEMATIC DIAGRAM MAIN SECTION(1/2)



4-21. SCHEMATIC DIAGRAM MAIN SECTION(2/2) • See page 43 for printed wiring board. • See page 60 for IC Block Diagrams.



The components identified by mark Δ or dotted line with mark Δ are critical for safety. Replace only with part number specified.

Les composants identifiés par une marque Δ sont critiques pour la sécurité. Ne les remplacer que par une pièce portant le numéro spécifié.

以阴影和 Δ 标志来识别的零部件，在安全方面具有关键性。因此只能以规定号码的零部件来更换。